



**NEW  
ARRIVAL**

## **8D6 DIESEL POWER WEEDER**

(Electric start with 6-Shift Gear Box)

Trusted by 1,00,000+ Proud Farmers



**APNI ZAMEEN  
APNI MACHINE**

**Useful for Inter-cultivation and Step Cultivation | Suitable for Horticulture and Plantation Crops  
Suitable for Both Dryland and Wetland Operations**

Eligible for Subsidy | Tested by FMTTI | 300+ Dealer Network

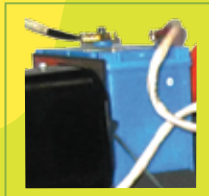
**Service Helpline No.: 09163220000 | [www.shrachiagrimech.com](http://www.shrachiagrimech.com)**

SPECIFICATIONS	8D6 DIESEL POWER WEEDER (Electric start with 6-Shift Gear Box)
Engine Model	186F Engine
Engine type	Single cylinder , Vertical, 4 stroke, air cooled, DI, diesel engine
Engine Power	7.4 HP@3000 RPM
No. of Gear Speed	2 Forward in each High & Low Speed, 1 Reverse in High & Low Speed
Mode of Transmission	PTO driven transmission
No. of Blade	16/24/32/40 adjustable
Weight	152 kgs
Acre/Hr	0.3-0.4
Fuel Consumption	1 (Litre/Hr)
Working Depth	76.2mm - 127mm (3"-5")
Working Width	800 mm (2.6ft)

## FEATURES



Handle-bar with LED light



Battery



6 Gears Shifting Gear Box

## POWER WEEDER APPLICATIONS



BACK ROTARY	
ATTACHMENT NAME	BACK ROTARY
ROTARY PTO SPEED(rpm)	300
CULTIVATING DEPTH(inch)	4
CULTIVATING WIDTH(feet)	1.6



DITCHER	
ATTACHMENT NAME	DITCHER
ROTARY PTO SPEED(rpm)	323
DITCHING DEPTH(inch)	4 - 10
DITCHING WIDTH(feet)	0.98



Steel Wheel



Paddy Wheel



Ridger



Single Plough



5 Tynes Cultivator



Sprayer Kit



Reaper



Dry Land L - Type Blades



Spike Blades



Wet Land Blades



Water Pump

Branch Office

Authorised Dealer



**Corporate Office:** Shrachi Tower, 686, Anandapur, E.M. Bypass Junction, Kolkata – 700 107 | +91 9163220000 | btlmktg@shrachi.com

**Registered Office:** 2, Jessore Road, Kolkata – 700 028 | +91 9007724621

**Branch Offices:** Cuttack | Guwahati | Patna | Indore | Raipur | Hyderabad | Bengaluru | Faridabad (Delhi) | Trichy (Chennai) | Sangli (Pune) | Durg | Lucknow | Chaibasa (Ranchi)